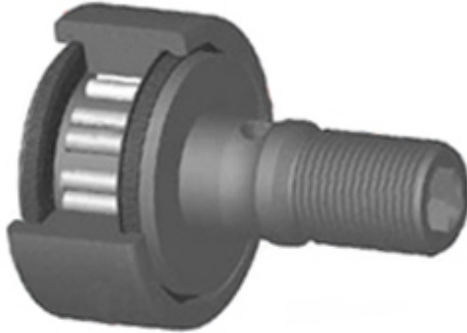




# GARLOCK BEARINGS LTD

## RBC BEARINGS CFM26 Cam Follower and Track Roller - Stud Type



Bearing No. CFM26

CFM26 Bearing 2D drawings and 3D CAD models

Category	Cam Follower and Track Roller - Stud Type
Inventory	0.0
Manufacturer Name	RBC BEARINGS
Minimum Buy Quantity	N/A
Weight	0.057
EAN	0637400618476
Product Group	B04120
Roller Surface Profile	Flat
Profile	Stud Type
Thread Size	M10X1
Stud Profile	Standard Stud
Enclosure	Sealed
Rolling Element	Needle Bearing
Relubricatable	Yes
Hex Socket	Yes
Inch - Metric	Metric
Other Features	Tandem Roller Pocket Design   Two Rollers Per Pocket
Long Description	26MM Roller Diameter; 12MM Roller Width; Flat Roller Surface; Stud Type; 10MM Stud Diameter; M10X1 Thread; Standard Stud; Sealed; Needle Bearing; Relubricatable; Hex Socket



## GARLOCK BEARINGS LTD

Category	Cam Followers Stud Type
UNSPSC	31171530
Harmonized Tariff Code	8482.40.00.00
Noun	Bearing
Keyword String	Cam Follower
Manufacturer URL	<a href="http://www.rbcbearings.com">http://www.rbcbearings.com</a>
Manufacturer Item Number	CFM26
Weight / LBS	0.126
Stud Diameter	0.394 Inch   10 Millimeter
Roller Width	0.472 Inch   12 Millimeter
Roller Diameter	1.024 Inch   26 Millimeter