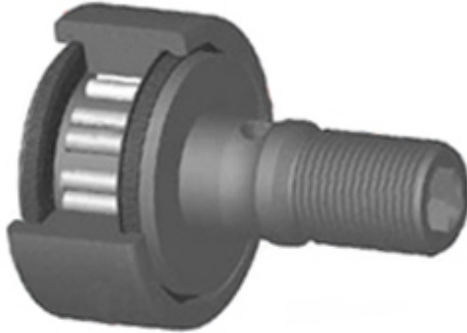




# GARLOCK BEARINGS LTD

## RBC BEARINGS CFM35 Cam Follower and Track Roller - Stud Type



Bearing No. CFM35

CFM35 Bearing 2D drawings and 3D CAD models

Category	Cam Follower and Track Roller - Stud Type
Inventory	0.0
Manufacturer Name	RBC BEARINGS
Minimum Buy Quantity	N/A
Weight	0.166
EAN	0637400617998
Product Group	B04120
Roller Surface Profile	Flat
Profile	Stud Type
Thread Size	M16X1.5
Stud Profile	Standard Stud
Enclosure	Sealed
Rolling Element	Needle Bearing
Relubricatable	Yes
Hex Socket	Yes
Inch - Metric	Metric
Other Features	Tandem Roller Pocket Design   Two Rollers Per Pocket
Long Description	35MM Roller Diameter; 18MM Roller Width; Flat Roller Surface; Stud Type; 16MM Stud Diameter; M16X1.5 Thread; Standard Stud; Sealed; Needle Bearing; Relubricatable; Hex Socket



## GARLOCK BEARINGS LTD

Category	Cam Followers Stud Type
UNSPSC	31171530
Harmonized Tariff Code	8482.40.00.00
Noun	Bearing
Keyword String	Cam Follower
Manufacturer URL	<a href="http://www.rbcbearings.com">http://www.rbcbearings.com</a>
Manufacturer Item Number	CFM35
Weight / LBS	0.366
Stud Diameter	0.63 Inch   16 Millimeter
Roller Width	0.709 Inch   18 Millimeter
Roller Diameter	1.378 Inch   35 Millimeter